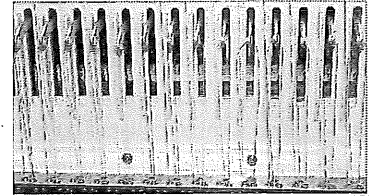
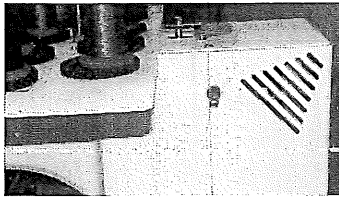


LOCATIONS THAT REQUIRE LUBRICATION WEEKLY:

Each needle bar needs a single drop of oil once a week. There are a total of 12 on the (Pro1200) and 15 oiling spots on the (Pro1500) here.

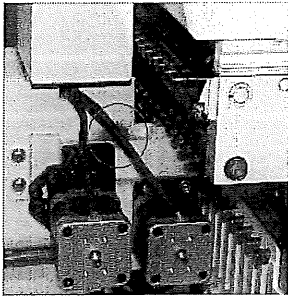
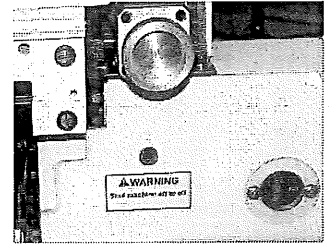


Located in front of the hand wheel is an oiling spot marked in red. Lubricate with a single drop of oil.



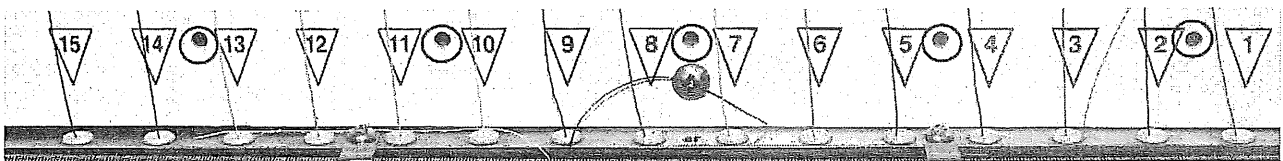
Located on the same side as the hand wheel towards the back of the machine there is an oil spot mark in red. Lubricate with a single drop of oil.

Place the machine in Needle 1 position. Located behind the rail is a silver cam that moves when the hand wheel is rotated. Lubricate the slot on top of this gear with a single drop of oil.

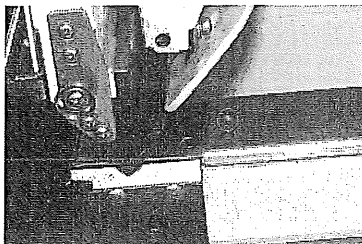


Located on the left side towards the back of the machine there is an oil spot above the two motors mark in red. Lubricate with a single drop of oil.

LOCATIONS THAT REQUIRE LUBRICATION EVERY MONTH:



From the front of the machine there are 5 oiling spots un-marked. They are between 2-3, 5-6, 8-9, 11-12 and 14-15. Lubricate each hole with a single drop of oil.



Locate the hole behind the needle plate and lubricate with a single drop of oil.

OILING THE MACHINE

Oiling is important for maintaining the machine performance over an extended period of time. Turn the power off when lubricating the embroidery machine.

Be sure to oil your machine as instructed below. To avoid spotting on garments being embroidered, oil the machine sparingly.

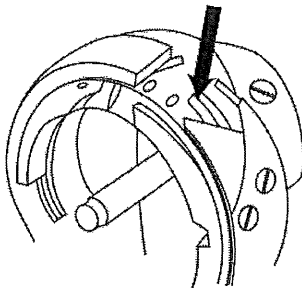
AFTER OILING SUGGESTIONS

- Embroider on two pieces of backing, or...
- Place rinse away topping over the first garment.

It is recommended to oil at the beginning of a shift to allow the oil to move through the machine as the day progresses.

Location	Frequency
Rail on rotary hook	Every 4 hours of operation
Presser foot drive shaft	Daily
Needle bar drive shaft	Daily
Presser foot needle bar drive shaft	Weekly
Inside the Arm	Weekly
Needle bars	Weekly
Inside the cylinder bed	Once a month
Needle bars felt packing	Once a month

LOCATIONS THAT REQUIRE LUBRICATION EVERY 3-4 HOURS OF OPERATION:



Locate the rail on the rotary hook. It is recommended to remove the needle plate and the bobbin case prior to oiling the hook. Once removed, use canned or compressed air to blow out the threads and dust out of the rotary hook. Lubricate the rail with a single drop of oil every 3-4 hours of productions. Press the "Trimming" button 2-3 times.

GREASING YOUR MACHINE:

INSTRUCTIONS FOR GREASING YOUR MEISTERGRAM EMBROIDERY MACHINE

The following are full instructions for properly greasing your embroidery machine. Greasing schedule is every three months. There are five greasing points on the machine. Have your machine OFF when greasing.

GREASING POINT	INTERVAL
Y LINEAR WAY - LEFT SIDE Y LINEAR WAY - RIGHT SIDE X LINEAR WAY CASE LINEAR CAM ROLLERS	ONCE EVERY 3 MONTHS

TOOLS NEEDED

- WHITE LITHIUM BASED GREASE
- PHILLIPS HEAD SCREWDRIVER

Y LINEAR WAY - LEFT AND RIGHT SIDE

Using the phillips screwdriver remove the front base cover and the rear base cover. Each side has six screws to remove for a total of 14 screws. (Photos show removal of one side, repeat process for other side.) With finger place a light coat of grease on the Y Linear Way.

X LINEAR WAY

Using the phillips screwdriver remove the X cover. There are four screws to remove. With finger place a light coat of grease on the X Linear Way.

CASE LINEAR

The Case Linear is found directly behind the head. Place your embroidery machine on Needle Position 1 or 15. With finger place a light coat of grease on the Case Linear. (To move to Needle Position 1 through 15, press the NUMBER keys to advance through the needle positions)

CASE ROLLERS

The Case Linear is found directly behind the head. Place your embroidery machine on Needle Position 1 or 15. With your finger, place a coat of grease on each of the 12/15 Cam Rollers. (To move to Needle Position 1 through 15, press the NUMBER keys to advance through the needle positions)